



TRILITH

Sales & Leasing Office: 290 Heatherden Avenue, Fayetteville, GA 30214

Palmyra

Palmyra's facade is a blend of East meets West with a design that relies heavily on classical proportions, balanced forms and refined details. These Terrace homes feature 3 bedrooms and 2.5 baths with an open, inviting floorplan. The main floor has 10' ceilings, a spacious kitchen with breakfast bar, dining and living area with fireplace. The upper floor features a Private Owner's Suite with large bath, walk-in closet and convenient laundry, two guest bedrooms, second bath, flex space and ample storage. The two car garage conveniently enters into the main level with an optional elevator available in select homes.



Building G, Unit 2

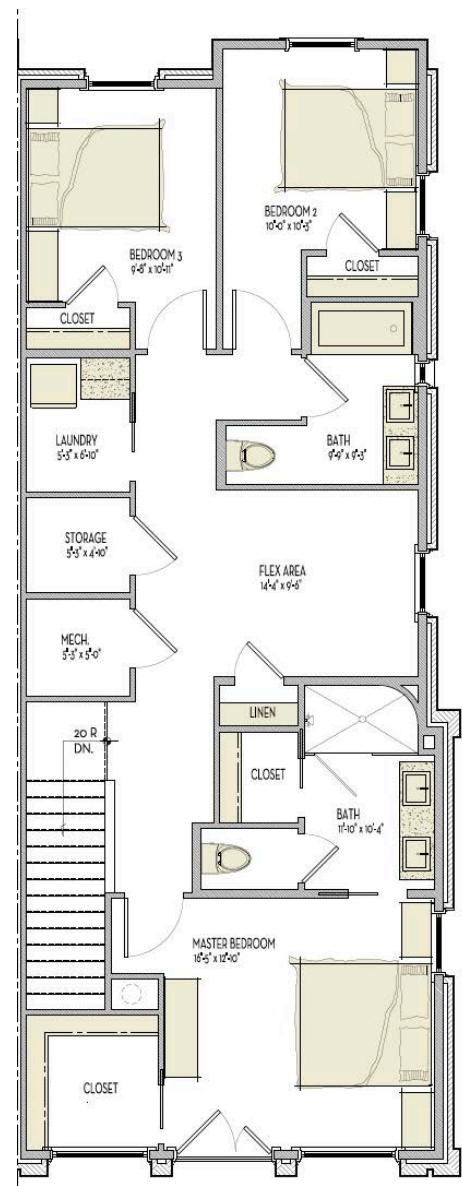
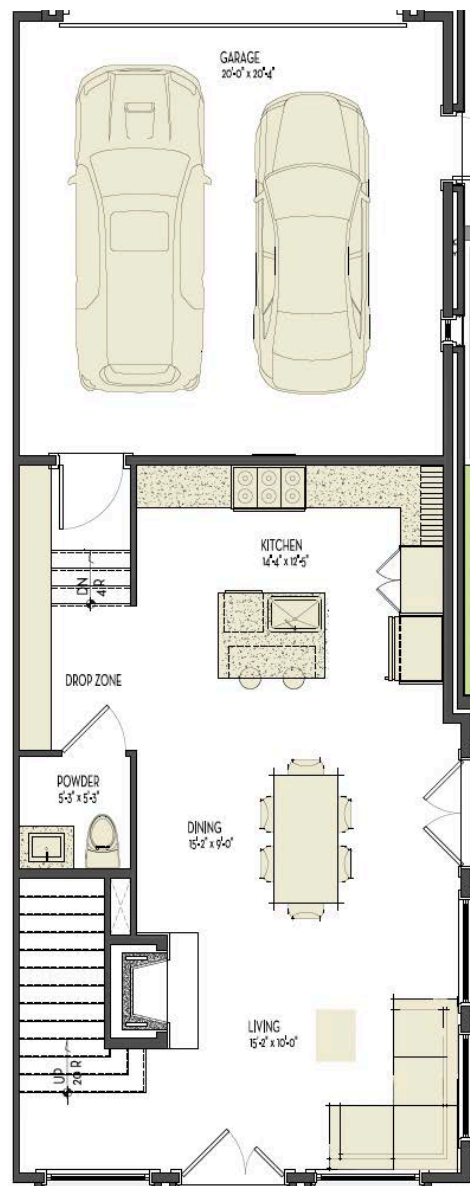
678.519.1008 | Trilith.com



Palmyra

3 Bedrooms & 2.5 Baths | 1,864-2,115 sq. ft.*

- 10' ceilings on main
- Open floor plan
- Spacious kitchen with breakfast bar
- Living area with fireplace
- Private owner's suite
- Trilith green building certification
- Geothermal HVAC system
- Prewired for electric vehicle charging station
- Professional landscaping



*Sample Floorplan.

678.519.1008 | Trilith.com